

12288

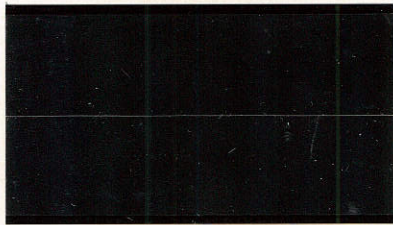
140-



12283

5405

#R103 Reconstructed mint block. Largest multiple. Ex-Joyce



13

#R104 One of only
four known blocks
of four



12308

30
c. 500

**#R105 Largest multiple
Ex-Joyce, Halstead**



110

**#R105 One of only three
known horizontal pairs**



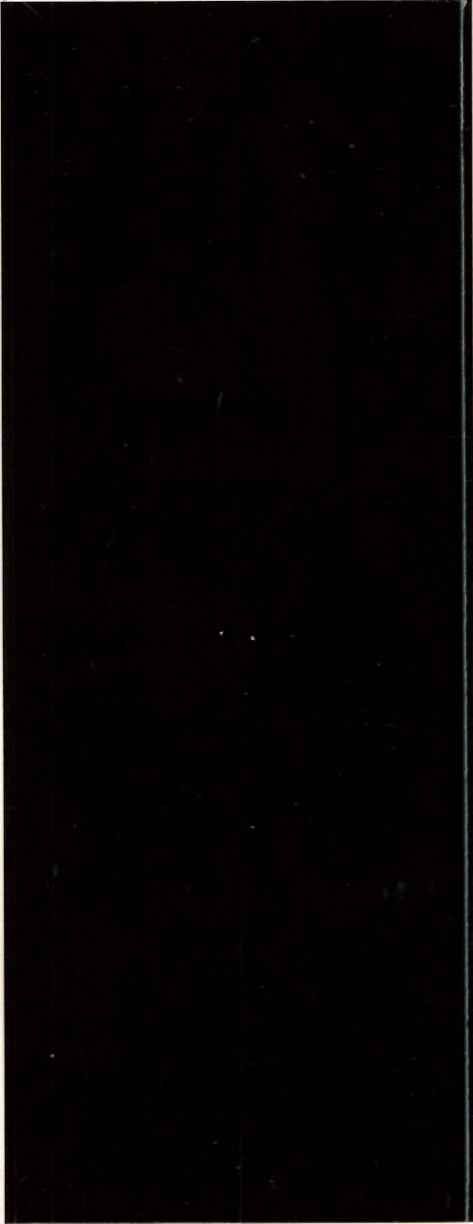
240

#R106 Third largest multiple (T)



240

#R106 Third largest multiple (T), and one of only two vert. pairs



12312

#R106 Mint. Largest multiple. Ex-Halstead.



#R107 Block of 60, mog, second largest multiple. Ex-Halstead

12323

377.00
C222



Pay to the

Order of Messrs Peck

Two Hundred and thirty three Dollars,

Value Received, and charge the same to account of

To Messrs G. B. Ferris & Co

58 Pearl Street New York

\$211.33



No.

#R107 Diagonal half on Feb. 17, 1873 draft in the amount of \$211.33

12333

C 107



500
C-460
12338



1170
12340

**#R108 Largest multiple
(T), and one of only
three known blocks of
four. Ex-Joyce, Halstead**



25



94

#R109 Mint



24



#R109 Block of 40, mint dog, largest multiple. Ex-Joyce, Halstead



175



176

#R110 Only known vertical pair



375

#R110 One of only four known blocks of four



47.5

#R111 Ex-Joyce



#R111 Second largest multiple(T) and largest known used multiple

125



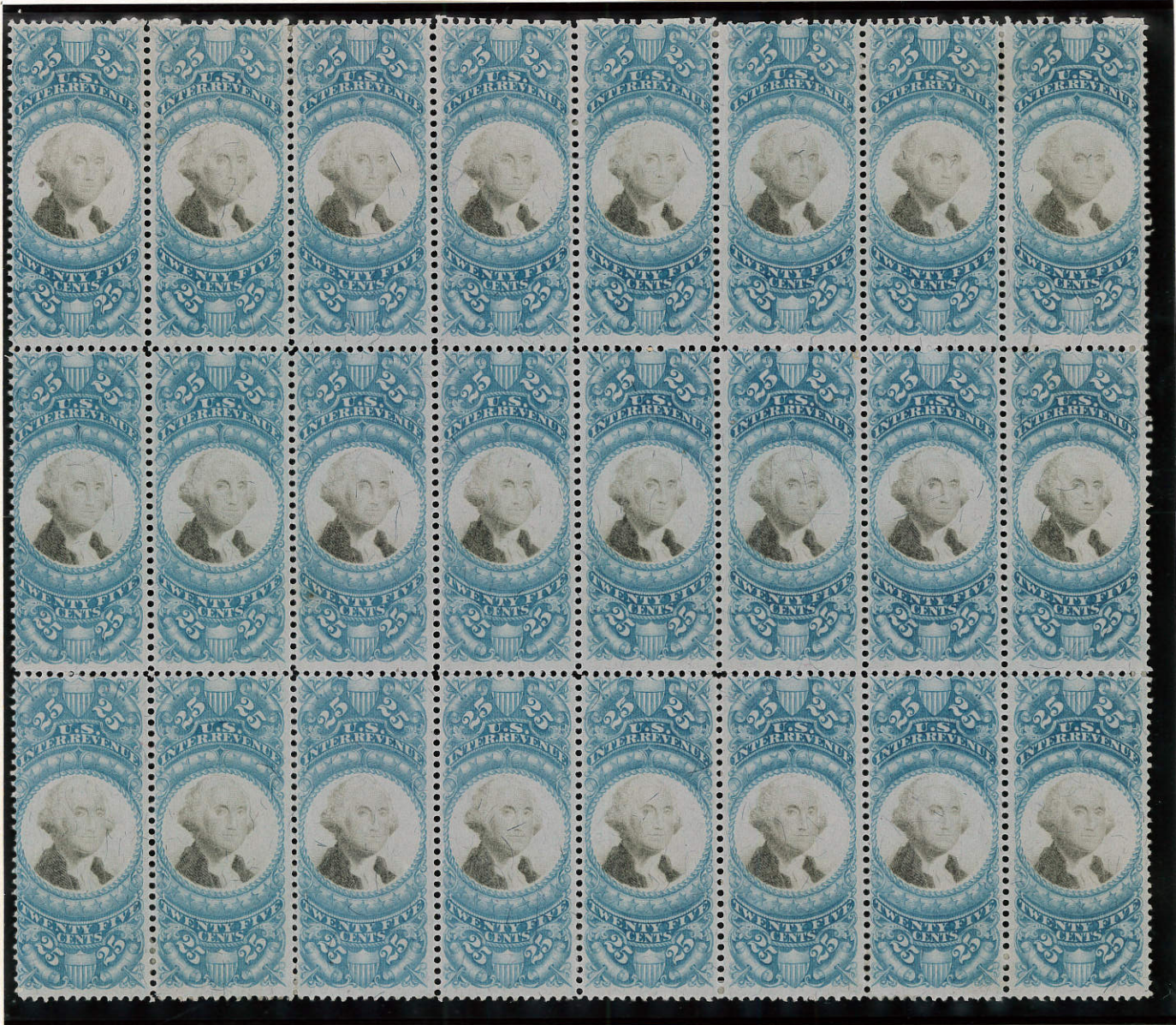
12376

#R111 Block of 20, mog, largest multiple. Ex-Joyce, Halstead

395
C #283







#R112 Block of 24, mog, largest multiple. Ex-Joyce, Halstead

12406



375

12410



12408



270
c220

R112b Third largest multiple (T) and one of only six known blocks of four. Ex-Joyce

#R112b Third largest multiple (T), and one of only three horiz. strips of four. Ex-Weill Bros

12411



475
100

#R112c Perforated 8



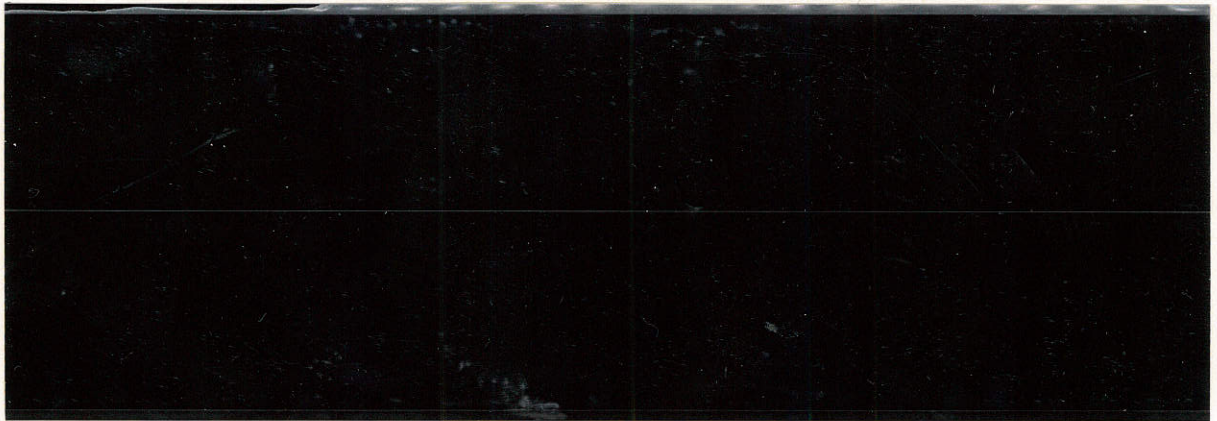
370



370



12420

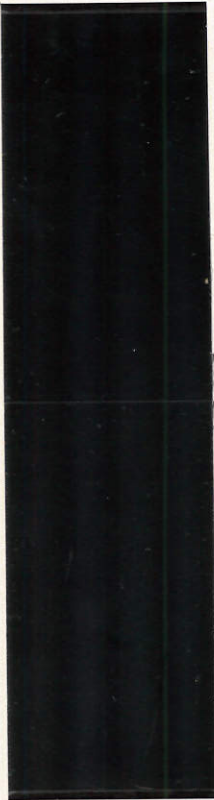


#R113 Largest multiple
Ex-Joyce, Halstead



275

#R114 Second largest multiple (T) and one of only three pairs



12427

#R114 Largest multiple Ex-Joyce, Halstead

J50
C of 270



#R115 Mint

12457



#R115b





#R115 block of 12 mog, the largest mint multiple (T)



#R115 block of 16, the largest used multiple

12446

Oct 5 '37
E480



45

#R115a sewing machine perfs

12448



2250

#R115a third largest multiple (T). ex-Weill Bros, Cunliffe



1900
F. P. M. A.

#R115a One of only two known horizontal pairs



12474



C29

#R117 Largest multiple
Ex-Joyce, Halstead



55



#R118 Second largest multiple. Ex-Joyce, Halstead

22
17

Smith, Andrew N. McDowell, John Tinkert and Samuel Royer,^t
the title to which by direct conveyances and assurances since
made and executed, has become vested in severally in fee simple
in the said William A. Hays, party of the first part.



Faint, illegible handwriting on the reverse side of the paper, likely bleed-through from the other side of the document.

#R118 Largest multiple



105 w/ 38

#R120 Largest multiple
Ex-Joyce, Halstead

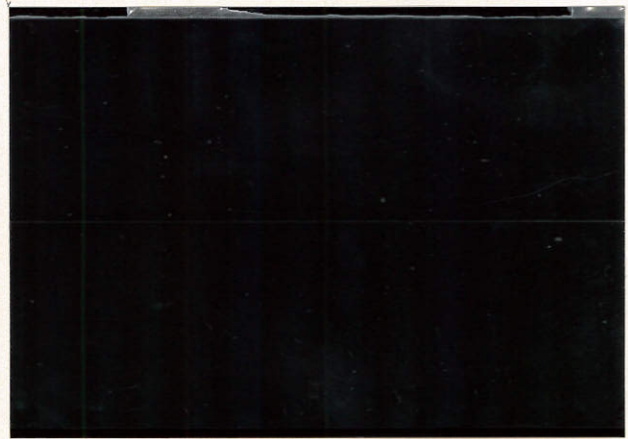
12514



700

#R121 One of only two horizontal pairs. Ex-Joyce

12515



#R121 Largest multiple, and the only horizontal strip of three Ex-Eagle, Joyce, Halstead

12520



#R122 One of four horizontal pairs, the only known multiples



EX-JOYCE 350



#R123 Largest multiple
Ex-Joyce, Halstead



112



112

#R124 One of only two known vertical pairs

12541



700
c 5/18

#R124 Third largest multiple(T)

1254R



C202

#R124 reconstructed largest multiple (T) ex-Cunliffe



12551



#R125 Second largest multiple (T). Ex-Eagle, Joyce

600
c27



12558

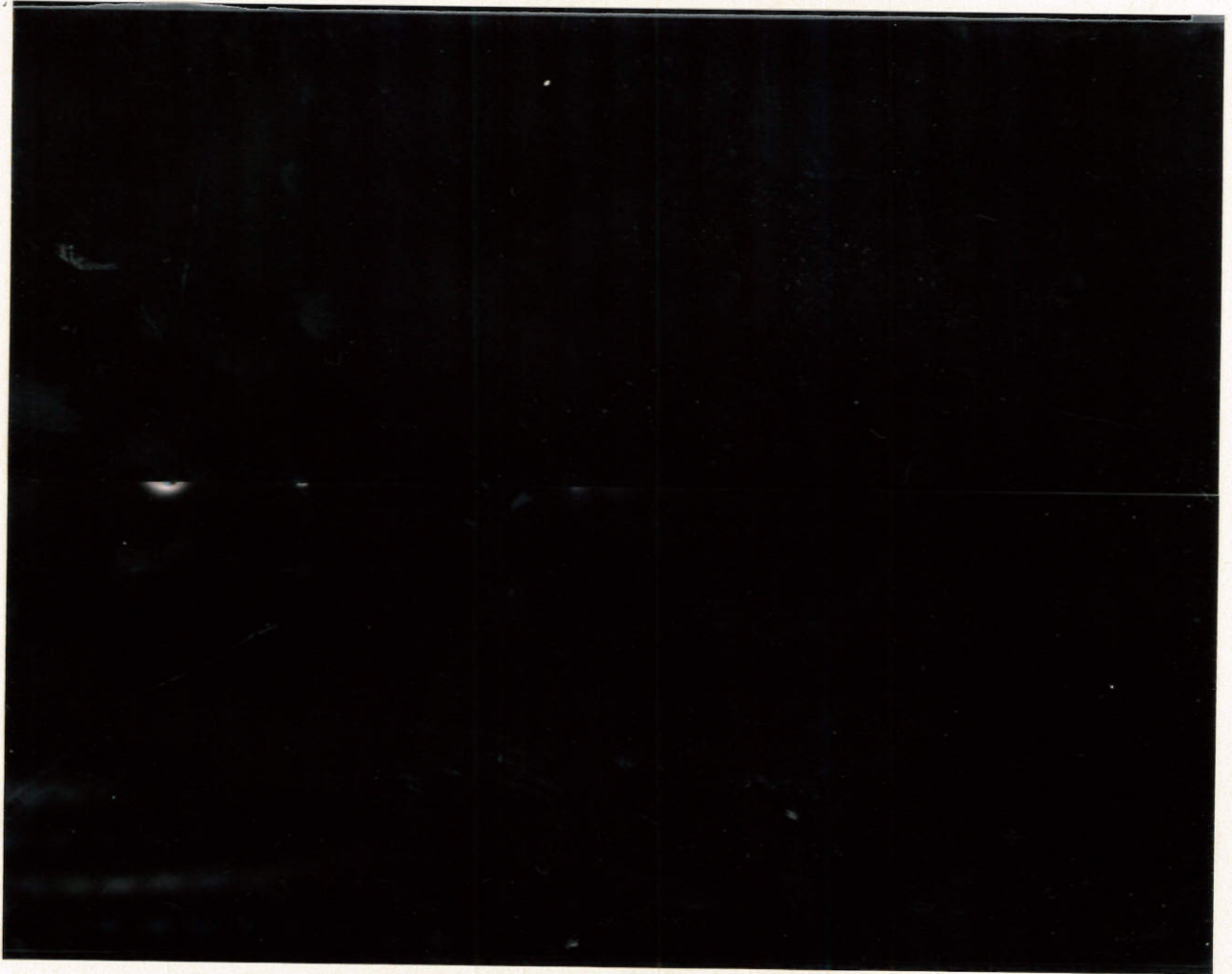
#R126 Largest multiple (T)

1100
c27



100

12572



1509

#R127 Largest multiple
Ex-Joyce, Halstead

12579



70

12582



1100

#R128 The only known block of 4. Ex-Joyce