

Lynchburg

43

Early Railroad Cancellation
Virginia & Tennessee R.F.



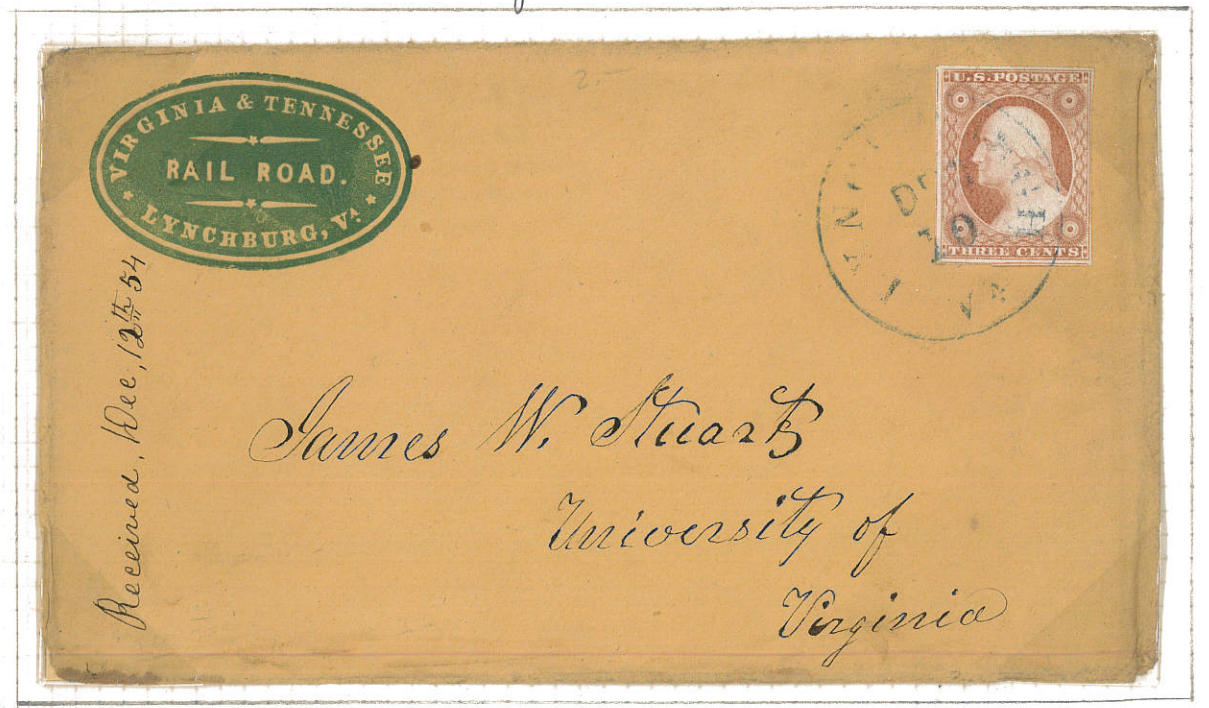
"Virga. & Tenn. R.F."
13 Jan - 1855

This letter, from Salem, Va. to Lynchburg, was handed to a mail agent of the Post Office Department assigned to the railroad to handle the mails - he applied the postmark

Lynchburg

42

Early Railroad Cover
Advertising Corner Card



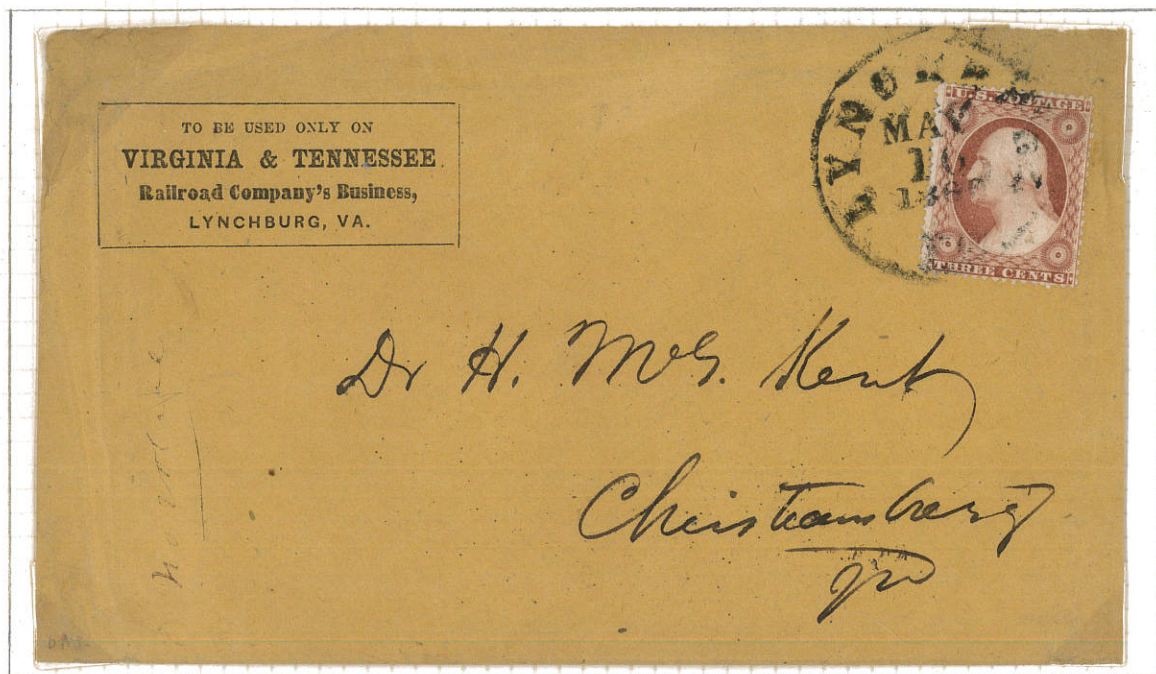
Dec 10 1854

The Virginia & Tennessee Railroad was chartered as the Lynchburg & Tennessee in 1848. The entire line from Lynchburg to Bristol was opened in 1856

Lynchburg

45

Early Railroad Cover
Advertising Corner Card



May 10 1860
fare corner card

Lynchburg

44

Early Railroad Cancellation
"Southside R.R."



Apr 27 - Date of use about 1855

The Southside Railroad opened in 1854
with a line from Petersburg to Lynchburg

This cover was handed to a mail
agent of the Post Office Department who was
assigned to the railroad to handle the mails -
he applied the postmark

Henry Tutwiler Esq
Green Spring
near
Havana P.O.
Alabama

56-c

Q:3



PAID Paid 5 cts

M. J. N. Smiley
at Law
Lynchburg Va.

A
1855

Q:



C. V. Winfree Esq
Lynchburg Va

Q:4



F. M. D. Cotman Esq
Eng. Office
Richmond Va

RR Cancellation

Q:7



Mrs Selina Coles -
Care of Rev. J. P. B. Wilmer
No. 557 Walnut Street
Philadelphia -

Q:



James W. Stuart
University of Virginia

Q:4



Confidential
Jm D Coleman Esq
"Engineer Office"
Richmond, Va

RR Cancellation

Q:4



Warren & Coles
Messrs Throat & Deane
Richmond Va

Q:

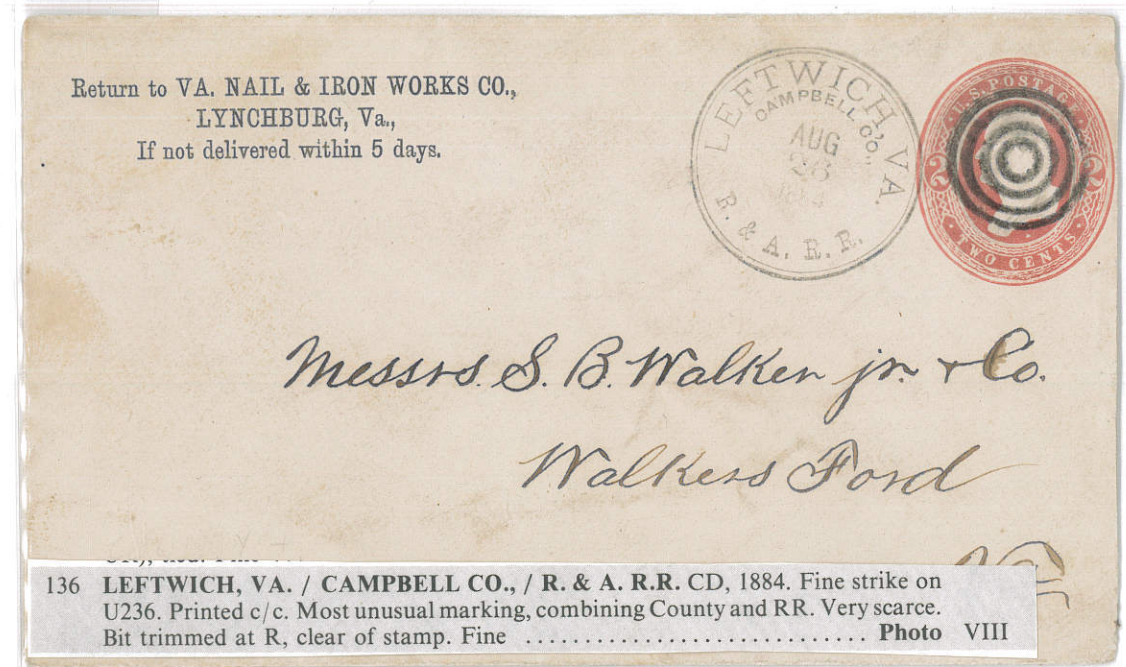
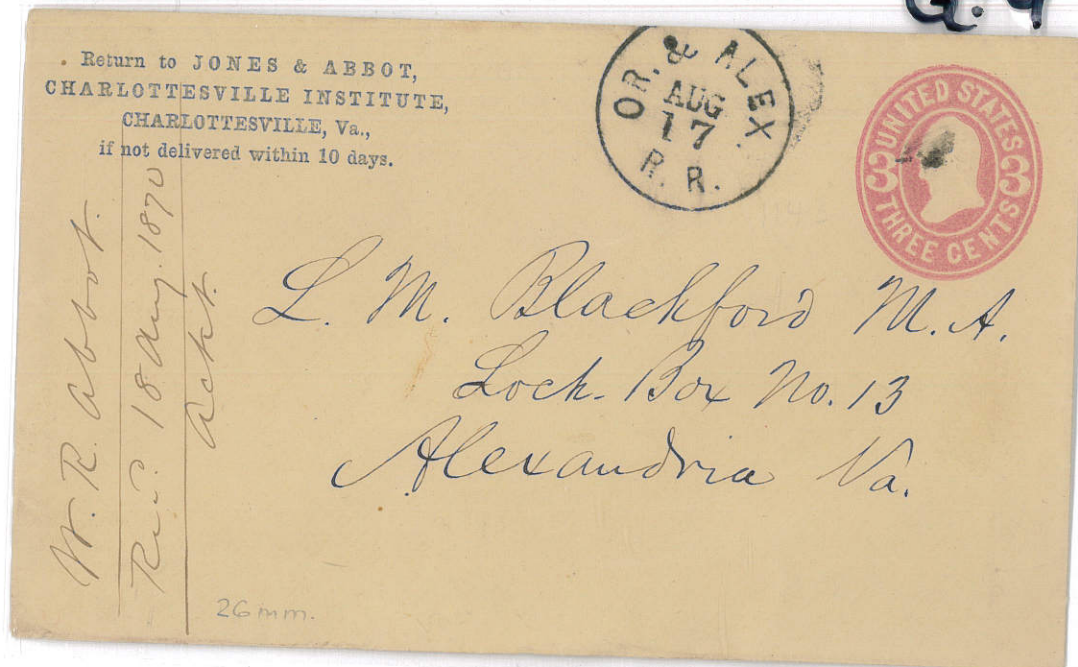


Mr R Edmunds Esq
Halifax Co H.

Q:4



Q:9



Q:8

