

Colombians

← #112



Shift - rt frame



Shift - rt. frame z.



Shift - rt. frames



accent above 1492



arrow - upper left



arrow - lower rt.



Shift - rt. frames



Shift, rt. frames



Slit - Shift - rd. frame



Printer's indicia left margin



Arrow - lower rt.



Shift - rt. frames



re-entry - at right



Mat - nice print



arrow - upper left



regular rd. N. LANDING - under-in spots at large Z's
or re-entry at right



in and above 'Landing of Columbus'

~~British Colonies~~ Columbians



Shift to right - long foot. Sft. shifts, vt. + left dbl.tr. at left bottom Sh.vt. + "landing Columbus"



Sh. left + "N" of United. recut frame, bottom left Shift right frame shift, right side



pronounced shift vt. almost complete doubling, major - especially "1892" shift, right side Spot in margin over "M"

#225



Shift, right frame shift toward right Guideline, T.L. margin Guideline into T.R. also shift to right



arrow at lower rt. Over-ink at top Shift - left frame v. sft. shift 2 of 1892



#75

shift - right side 2 dots in top margin shift L, short R, recut R two lines, in L. margin



Shift, L. frame shift to right Shift to right shift to right

Columbians



eye dot above "C" of America Shift - right frame sft. shift - left frame + "2." shift - right frames



Shift - right frames eye dot above "C" of America Two scratches - left margin dots into "1492"

#73



#117

shift - right frame dbl.tr. - "landing" dbl.tr. - "landing" Mark - Rt end bottom network panel



left frame - "landing of Columbus" - right frame + possible crack in E of States.

underinked at left dbl.tr. lower left d.t. lower vt. + 1892" double transfer



#80

shift at vt. + 1892" Shift - right frame lines shift - right frame lines mark to left of crossbar of cross



Perforation freak Shift - vt. frame lines shift - vt. frame shift - right side

#143



mark vt. margin - vt of "2" dbl.tr. "1492", left "2", left frame dbl.tr. below G of Postage + qsch. bot. G + L. poor recut - bottom L frame

Columbians



dbl. tr. at right *good - same* broken frame at L. broken frame at L. dbl. tr. at Rt.



dbl. tr. at right dbl. tr. at Left dbl. tr. at Left *good* dbl. tr. Left 3rd



dbl. tr. at right dbl. tr. at right dbl. tr. "Landing" *very good* d.t. "Landing" + ornament



1892 d.t. at Right d.t. at L, "1892", etc dbl. tr. at Left dbl. tr. at right



dbl. tr. at right *good* dbl. tr. "1892" + t. dbl. tr. at right dbl. tr. pic. frame at L.



#49 row of dots at L. *1892* - "UN" etc. d.t. "92" of "1892" d.t. Left - "UN" major dbl/tr

Columbians



dbl. tr. "ES it states" dbl. tr. at right *major* dbl. tr. ~~1892~~ almost entire stamp dbl. tr. or kiss



dbl. tr. at right dbl. tr. at right "D" of United cracked? "eye dot, below 9", 1492



good - scratch thru "cents" dbl. tr. at right d.t. or kiss at top dbl. tr. at right



two "eye" dots *good* dbl. tr. at left "2" and upper 1/3d dbl. tr. at right arrow at top. + dbl/tr - "cents 2"



d.t. in "States" *good* short transfer - T.R. dbl. tr. at right Spot under Landing



#117



Heavy mark at L.R. *good* dbl. tr. "F" of "OF (top)" dbl. tr. at right dbl. tr. at right

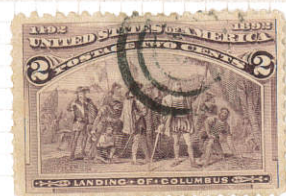
#168

two dots in margin over first 5 in States dbl. tr. at right dbl. tr. at Lower right d.t. at b. or over-ink

#145

Columbians

remounted
strong dbl. trs.
entire NE area of stamp



re-entry - at rt frame line



re-entry - at left frame line



re-entry - at rt. frame line



re-entry - at rt. frame line



under-ink, flagstand becomes a torch



strong dbl. trs. esp. in both "1's"



dbl. tr. 'Columbus' + right frame of picture



re-entry, rt. frame



crowned plate b/w 0+5 of "Postage"

Columbians



Double Transfer
Entire top third of stamp.
also ~~at~~ lower left corner.



Major - Double Transfer
complete "Landing of Columbus"
partial "Two Cents"



Guide Line
above Top-right - and
another parallel to it, in and
beyond top-right. (v. weak)



Double Transfer
Entire right third
of stamp. ~~at right~~
Also broken hat.



Double Transfer
Outer + inner Left frame
lines - f "U" of United



Double Transfer
slight - at right



Double Transfer
Right side of stamp



double Transfer
slight - at right.



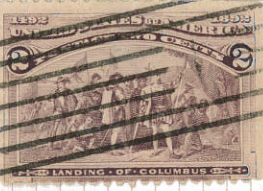
Triple transfer seen in "48"92"
~~at right~~
including Rr "2"-1892



double transfer
right side of Stamp



weak trans. at Rt.



weak trans. at Rt.



dbl. tr. at right



dbl. tr. at L. and Rt.



stitch watermark
horiz. across center



dbl. tr. to right



dbl. tr. to rt. + rt. base



dbl. tr. below Rt "2"



star-shaped
Spots - lower - rt



dbl. tr. on right



dbl. tr. on right



dbl. tr. on left

#224

dbl. trans.
esp.
top of "Barcelona"

Columbians

dbl. tr.
line below "6"

35-

mint
35-

dbl. tr. thru top of "ED", below postage

5-

5-

identical
plate position

dbl. tr. at left margin

mint
35-

strong dbl. transf.
~~General d.t. or overprint~~. Genl. dbl. toward left
strong dbl. trans.

identical
plate
position



dbl. tr. "POSTAGE TEN"
right "10", right picture frames
etc. "1892"

dbl. transf. - Left margin
Lettering top + bottom -
Left "10", etc.



dist. transfer at "postage ten"
dbl. trans. at left margin

shift in left lines

shift tr. to left



arrow lower right -
+ shift to left

shift do left

shift do left



Shift to left

Shift to left

faulty inking - upper pt.



two dots - top margin

two dots - top margin
slt. shift at right

strong shift at left

mint
10-



strong d.t. esp. vert. lines in "1's"

mint, O.G.
shift, left frame, ~~eliminate~~

~~eliminate~~
shift, left frame, traces left "1", etc.

dbl. - "Postage" + "Columbus"



~~eliminate~~
shift esp. - best in center "Five Cents"



~~eliminate~~

mint, O.G. "Postage" + below "Cents"

shift, esp. in "Barcelona"

mint, O.G.
d.t. below "Six Cents"

major d.t. - traces in entire stamp, but esp. left frames + "10"

mint, O.G.
major d.t. - traces throughout upper - esp. strong in + below "postage ten" (best example - stamp on pt.)

Columbian Cancels



Columbian Cancels



No. 68, 10¢ green



"Paid" cancel

double transfer
~~to~~
esp. "10 cents" "0" "5"

Columbian Cancels



Type A-44a+b

- #134 - white wave paper, thin to medium thick w/grill 10x12 mm or 8 1/2 x 10 mm. April 12, 1870.
- #145 - as #134 without grill.
- #156 - paper, thin to thick w/grill 7x9 1/2 mm #small dash in pearl left of numeral "1", July, 1873.
- #182 - soft porous paper, without grill. Feb, 1879
- #206 - Re-engraved, vertical lines at top deepened, lines of shading added to upper arabesques, Aug. 1881



182-dark ultrama. 182-dark ultrama. 182-dark ultrama. 182-dark ultrama. w/silk fibres 182#-blue



182a-blue star w/h "city" wavy circle for 182a-blue 182a-blue w/silk fibres 182b-gray blue 145-ultramarine

145-ultramarine "Paid All" 206a-dull blue wheel of fortune 206 206-gray blue San Fran. "Ship" 206 "R" "Lersdale, Indiana" Mar 26, 1887 206



206



Brooklyn, N.Y. Red



206



206



206



206



206



206



206



206



206

POSTAL MARKINGS—Patent Defacing Cancellations

patent cancel on No. 178 - 1875 issue



58 LINN'S STAMP NEWS JANUARY 5, 1987

Defacing cancel;

QUESTION: I have a copy of U.S. Scott 183 with a rather un-

Question Corner

usual cancellation, as shown on the copy illustrated.

The dots in the center perforate the paper with ink, like an inked grill. Was this a patented cancellation tried out by the post office to prevent removal?

ANSWER: Yes, this appears to be one of the defacing can-

celers used in the mid-1800s.

For some time after stamps came into use in the United States in 1847, the Post Office Department looked for a way of canceling stamps to ensure they would not be reused.

One idea was to make cancelers with blades or pins that would cut the surface of the paper as the cancellation was applied.

This would allow the canceling ink to soak into the fibers of the stamp more completely than if the cancellation was just applied to the surface.

According to the Scott catalog, about 125 different kinds

of cancelers of this type are known. Patents were granted to many inventors for these cancelers.

They were used until about 1887.

The stamp shown, the 2¢ Andrew Jackson of 1879, is one of the stamps most often found with a defacing cancel.

Others are the 3¢ Washington of 1861 (Scott 65), 3¢ Washington of 1870 (Scott 147), 3¢ Washington of 1873 (Scott 158) and 3¢ Washington of 1879 (Scott 184).

Further details on defacing cancellations can be found in the Scott Specialized Cata-

logue of United States Stamps in the Information for Collec-



A canceler perforated this stamp with ink.

2¢ green # 212, Sep 10, 1887



Alaska



Fish



The One Cent Franklin - from 1870
 A44, w/o secret mark (including w/gill)
 A44a - ~~with orange brown~~ with secret mark
 A44b - reengraved (generally greyish)

A44a
 15¢
 hard paper



A44a
 15¢
 hard paper



cancel "A" cancel "K" "st. Louis 2"

A44b
 20¢
 re-engraved



U.S.
Negative Letters and Nos.

Bil. III - 0.30
LB-63



remnants



III
LB-70

LC-3



III, LC-55



Scott #300

United States, 1902
1d Green, Franklin, 3 Feb 1903



R+E joined



R+E joined



R+E joined



R+E joined



R+E joined



extraordinary
centering



Center-Line



short transfer
at bottom



R+E joined



R+E joined



mark "right" 1"



vert. position line
"Top United" - "N of One"



abl. tr. at top + right
and line thru 'state'



ghost perfor, possible 'line variety'
extra row at right at right bottom

New York City Foreign Parcel Post Cancels

Used on first class mail as well as parcel post packages in section 32 of the Varney St. G.P.O, which was in charge of foreign mail - Sometimes loosely called "Supplementary" MEXETS Weekly Stamp News - Summer 1932 - W.L. Babcock.



**U.S.
New York For'n Mail**

C = \$5-10-
D = \$10-20-



United States
Supplementary Mail, Type G

NOTES ON COMMON U. S. STAMPS—XI

W. L. BARCOCK, M. D., Detroit, Mich.



Cunard Line
on #23
on #273



New York Supplementary Mails. Current Post-Mark—Many collectors are unaware that a Supplementary Mail cancellation is still in use by the New York Post Office. This is known as Type C and is illustrated below. It was first described in the A. P. Nov., 1923. Late mail is dispatched to the steamship piers where first class items receive this postmark by a postal clerk, who is at the pier for 90 minutes before sailing. Business firms or individuals may despatch mail to the pier direct or through the Foreign Station at Morton, Washington and West Streets. This postmark can

be identified by the lower number in center; otherwise it resembles a common domestic station cancellation for second class mail. It is produced by a rubber faced handstamp 33x value—the long axis horizontal. The number in center identifies the S. S. Line, but does not correspond to the S. S. pier number. It was used on 22 steamship piers; 11 in New York and 5 in Hoboken. The piers have been identified from prior to several White Star Line, Pier No. 60—St. W.; No. 2—Cunard Line, Pier No. 14—foot 14th St. W.; No. 3—Pier 57—foot 15th St. W.; No. 4—U. S. Lines?; Nos. 6 to 22. The mark appears more often on stamps issued than on the stamp, though it occurs on both. This explains its use as a cancellation on the stamp. It is to be looked for on 3 or 5 cent stamps, though it occurs on 1 and 2 cent stamps in combination, to make 3 cents. The following of qualified Oct., 1922.

countries' or handed in at the 'supplementary mail' window, and double the regular postage must be prepaid in all cases. Articles deposited in said drops after the closing of the regular mail, for despatch by a particular vessel, will not be so forwarded unless such additional postage is fully prepaid thereon by stamps and the articles are mailed before the supplementary closing time. At the foreign station supplementary mail closes half an hour later than the supplementary closing time shown below, except that the supplementary mail for European countries and for Central America, etc., via Cristobal, closes one hour later.

On Steamship Piers. Double postage required. Whenever mail vessels of the American, Red Star, White Star, Cunard, French, United States Lines, Norwegian-American, Scandinavian-American, Swedish-American, Holland-American, New York and Cuba Mail, United Fruit, Lamport and Holt, Panama, Red 'D', New York and Porto Rico, Munson, Grace, Royal Mail, Pacific Steam Navigation, Clyde (Santo Domingo) and Quebec lines, sail between the hours of 9 A. M. and 6 P. M., the supplementary mail post office on the steamship pier is open to the public 1 1/2 hours before the scheduled sailing time and closes 10 minutes before the scheduled sailing time."

E. B. Sterling—What memories arise at sight of this name. A resident of Trenton, New Jersey. A collector for 50 years; a dealer for 30 years, and a big-hearted friend. He sold many stamps and he gave many away. Collectors of a generation past who knew him will recall his many fine qualities. He was an authority on U. S. Revenues and Carriers. A score or more of his friends received, and if living still have, a memento of him in the shape of a stamp from the mail of the "Steamer Oregon" sunk off Fire Island on March 14, 1886. This mail included a packet of his stamps returned by John G. Payne, Godaluring, England. He received it on March 31, 1886, labeled by Postmaster of New York City to the effect that it was salvaged from the mail of the sunken "Steamer Oregon". The package had been water soaked, but the stamps were little damaged. They consisted of U. S. 1851—10 and 12c and 5 to 90c of 1861 and 1870. He mounted 58 stamps on gilt edged white cards, each numbered, and distributed them to his friends. Mine was a 24



cent purple 1870-1 with N. Y. Export cancellation, and the attractive printed card reads—"I hereby certify that the above stamp is one of 58 received by me from the Steamer Oregon sunk off Fire Island, March 14th, 1886". Signed, "Respectfully, E. B. Sterling, Trenton, N. J., March 31, 1886." Who has a duplicate of this relic?

New York For'n. Mail - 20th Cent.



U.S.
Early use in Porto Rico.



listed w/o price



United States
Military Station; Philippines



54 Trans-Mississippi Issue, Scott # 288



24, Trans-Miss; #186



H.I. Various # 114
Ann Arbor, Mich, 1883



on U-I
N.Y. ocean mail



on U-27 - Trenton, Tenn
in Green, May 9, 1861,
used last month in Confederacy.

Cancels on Cut Squares



"0" unlisted in H-Zor Billig II
* on U-161 (Die 1)



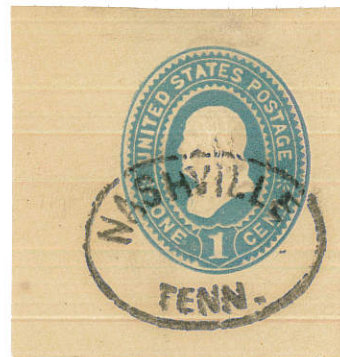
"---+RALIA"
Postmaster? + word of life
on U-113



"po"
on U-113a



Blue Cincinnati
on U-116



Town strike
U-296



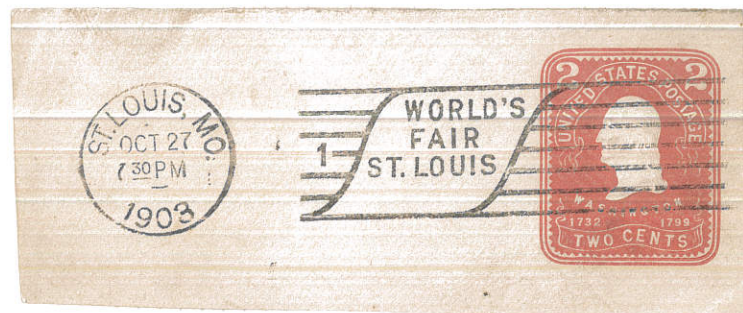
"1" in ovals
* on U-147



N.Y. foreign mail # 66
on U-58



"Rec'd" strike
on W-357



N.Y. parcel post supplm.
* on W-269



Wells-Fargo & Co.
Sacramento
on U-27



Wells-Fargo & Co.
Sacramento
on U-34



Wells-Fargo & Co.
Sacramento
on U-34



on U-58



Wells-Fargo & Co.
Sacramento
on U-34



on U-34



Special Printing-1935

Nat'l Parks, 1¢ green, Imperf, #756
Margin Blocks of 4, Arrow & guide line.



Special Printing-1935

Mothers of America, 3¢ deep violet, #754

Margin Blocks of 4, Arrow & guide line

