

Robert A. Siegel Consignment – February 28, 2023

One-cent National Essay & Proof Single frame gold medal exhibit

This exhibit was built over a period of several years and benefited from the sale of Finkelburg holdings, eventually the Lake Shore sales and private treaty from William S. Langs. The origin of the essay material can be traced back to Edward Mandel, The Earl of Crawford, and Falk Finkelburg.

Every aspect of the design, development, and production has been covered, there is nothing missing. There are 13 unique or very rare items, several which are not catalogued by Scott, in the exhibit.

1. 145-E3, 145-E4, & 145-E5 The three unique models come from the Crawford collection via the Brazer/Joyce collection sold in 1990. Brazer had been a significant buyer in the seven Crawford sales held by Harmer, Rooke, & Co. in the 1940's. **Unique**
2. 145-E9b Black vignette of Franklin facing left on India paper with the blind embossed albino impression "J.I.PEASE" which identified the engraver of the vignette, Joseph I. Pease. **Unique**
3. One-cent essay pulled on complete envelope. The only known example this size, on white laid paper. **Unique**
4. 145-E8c Dismal dusky yellow die essay on thick wove paper. Only example that I have seen.
5. 145-E8b Set of four die essays pulled on ivory glazed paper and signed by the frame engraver: A.W. Cunningham. These are believed to have been produced by Edward Mandel when he was involved with the American Bank Note Company. He had engravers sign items for him. **Unique set**
6. 145-E8a Full size Carmine rose die essay. One of the very few remaining full size die essays.
7. 145P1 Ultramarine finished and hardened large die proof signed by the frame engraver: A.W. Cunningham & Girsh **Unique**
8. 145P1 Ultramarine large die proof with embossed "garter seal" reading: "National Bank Note Co. NY". Only one set of the National die proofs was produced with this seal. Long since broken up. **Unique**
9. 145P3 Ultramarine plate block of 14 from the lower left part of the left sheet. Only recorded copy to come onto the market in the past 30 years. **Very rare**
10. 145P2a Ultramarine Pan-Pacific small die proof. **One of five known copies.**

## **Synopsis of the One-Frame Exhibit: The National Bank Note Company's Essays and Proofs Leading to the Design of the One-Cent Issue of 1870**

**Treatment:** This one-frame exhibit illustrates the essays and proofs in the manufacture of the National Bank Note Company's one cent postage stamp from the United States' 1870 issue.

**Philatelic Importance:** This issue replaced the unpopular Issue of 1869. This was the first contract for the National Bank Note Company. This issue provided a larger-sized stamp that was much better received by the public and also made stamps more difficult to counterfeit.

**Philatelic and General Knowledge, Personal Study and Research:** This exhibit shows the most complete collection of essays and proofs for this stamp. The three essays on pages one and two are unique. The page three small die essay on white laid paper is the only known copy of this one cent issue on a cover and is unlisted in the Catalog of United States Stamped Envelope Essays and Proofs, by Dan Undersander. The page three left-facing vignette of Franklin with the "J.I. Pease" impression is the only known copy. The page ten set of four die essays signed by the frame engraver, A.W. Cunningham, is the only reported set. The page 15 large die proof with the embossed "National Bank Note Co. N.Y." seal is the only known copy. I have researched all major auctions for the past 30 years and only one sheet proof with the imprint and plate number has been sold.

**Rarity:** The significant items, denoted with a pale green backing in the exhibit, are as follows:

Page 1 - Original essay is unique.

Page 2 - Two original essays on card are both unique.

Page 3 - A black, die essay showing a vignette of Franklin, facing left, with an albino impression of "J.I. Pease" is the only known copy.

A one cent essay, line engraved complete envelope, the only reported copy.

Page 10 - Four die essays pulled on ivory paper and signed by the frame engraver, A.W. Cunningham – only reported copies.

Page 11 - Carmine Rose full large die essay pulled on India paper and die sunk on card. Full sized cards are very scarce.

Page 15 - Ultramarine large die proof embossed with a "National Bank Note Co. N.Y." seal is the only known copy.

Page 16 - Roosevelt small die proof – only 85 sets were prepared.

Panama-Pacific Exposition proof – only five sets were prepared.

**Condition:** This exhibit shows essays on various papers and cards in excellent conditions. The proofs are in excellent condition.

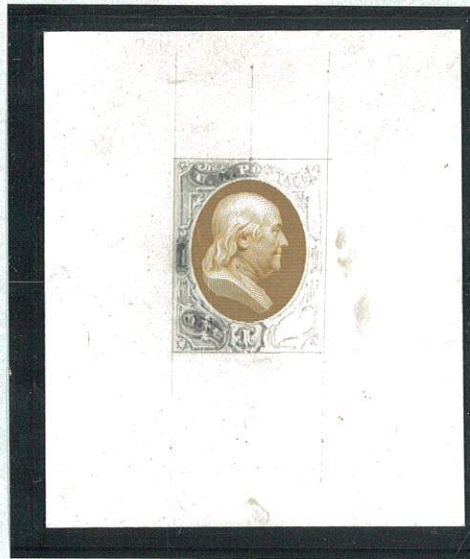
### **References:**

1. Catalog of United States Stamped Envelope Essays and Proofs, by Dan Undersander, published by the United Postal Stationery Society.
2. James E. Lee, Professional Philatelist, personal correspondences, 2009-2019.
3. Scott Specialized Catalogue of United States Stamps & Covers, Scott Publishing Company, 2018.
4. The Postage Stamps of the United States, by John N. Luff, published by The Scott Stamp & Coin Company, Ltd., 1902.
5. Robert A. Siegel Auction Sale 816 – The Falk Finkelburg Collection of United States Essays and Proofs, September 29, 1999.

---

# The National Bank Note Company's Essays and Proofs Leading to the Design Of the One Cent Issue of 1870

---



Original Essay Watercolor on Card – Unique  
Ex Earl of Crawford

## EXHIBIT PLAN

### Design Sources

#### Essays

Original  
Small Die  
Large Die

#### Proofs

Large Die  
Small Die  
Trial Color

### Epilogue

20<sup>th</sup> Century Proofs

The purpose of this exhibit is to illustrate the essays and proofs in the manufacture of the National Bank Note Company's one cent postage stamp from the 1870 Issue. This exhibit covers the entire pre-production cycle starting with essays and continuing with essay proofs, large and small die proofs, proofs, proof trial colors, and the epilogue showing 20<sup>th</sup> Century proofs. This one-frame exhibit shows the most interesting color varieties.

The Issue of 1870 was produced by the National Bank Note Co. This firm was the United States Post Office Department's contractor for printing postage stamps from 1861 to 1873. This issue replaced the Issue of 1869. It is one-third larger in size than its predecessor. It also demonstrates a higher grade of artistic skill in composition and exposition, and also made stamps more difficult to counterfeit.

Key items are denoted with a pale green backing.

Essays are artwork officially proposed as the design for a stamp. It is artwork that was not adopted for the final design, thus it differs from the issued stamp. Note that Benjamin Franklin's bust is reversed from the final design. A progressive die proof is a special type of essay sometimes referred to as "die essay". They are printed (pulled) directly from the die.



Original Essay on Card – Unique  
Dull Dark Orange, Watercolor Frame  
On Card; Engraved Vignette Mounted in  
Place. Ex Earl of Crawford.



Original Essay on Card – Unique  
Engraved incomplete Franklin vignette, facing right  
Mounted over pencil sketch of frame on a thin white  
Card, 55x66 mm.

**Small Die Essays** – All three essays are the same size, however, larger mounting gives the illusion of a smaller vignette

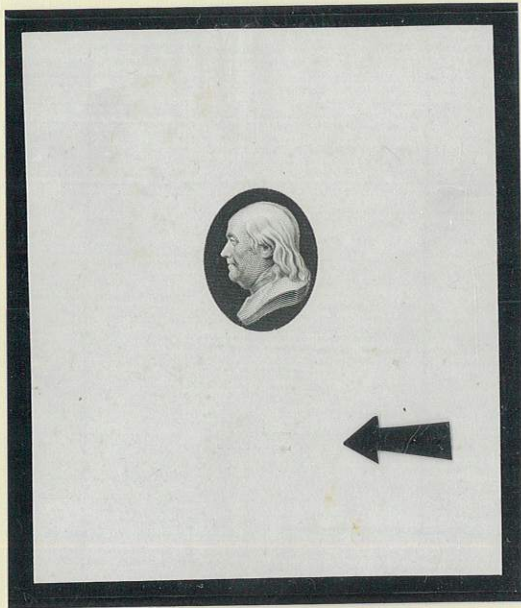


Black vignette of Franklin, facing  
left on white glazed paper.



Black vignette of Franklin, facing  
right on card stock

Small Die Essays Continued

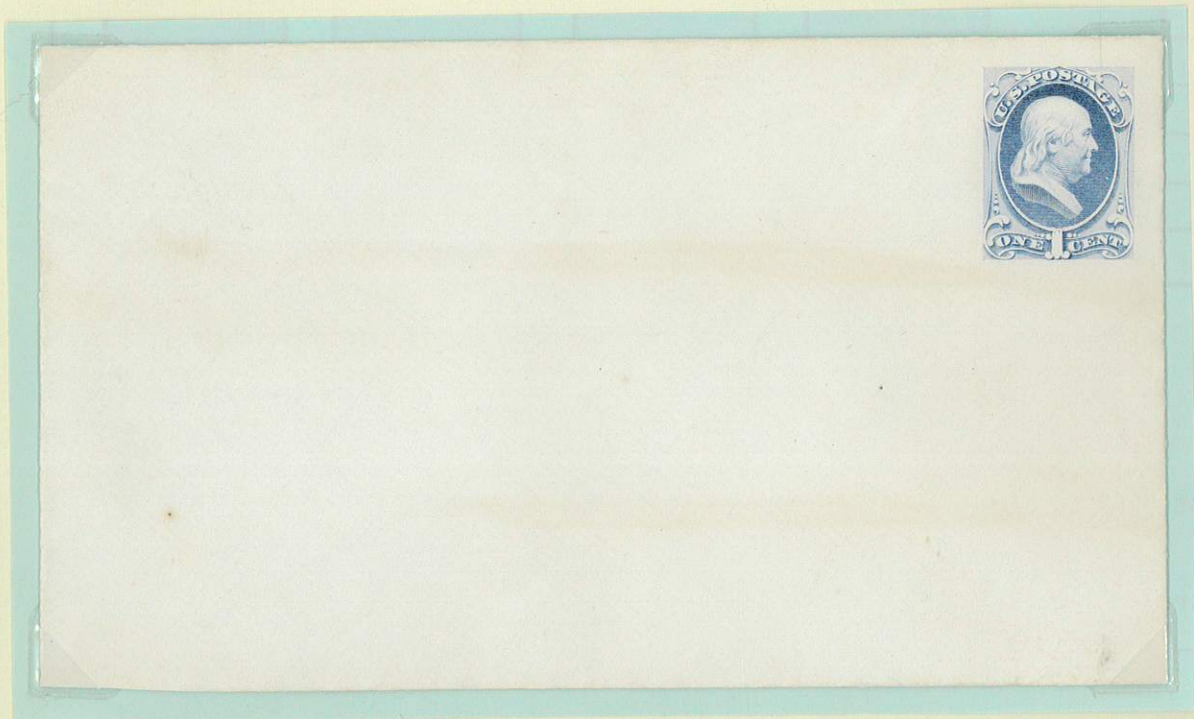


Black vignette of Franklin, facing left, on India paper, 61x72 mm, with an albino impression of "J.I. Pease" the engraver (Joseph Ives Pease, born 8/9/1809 died 7/2/1883).

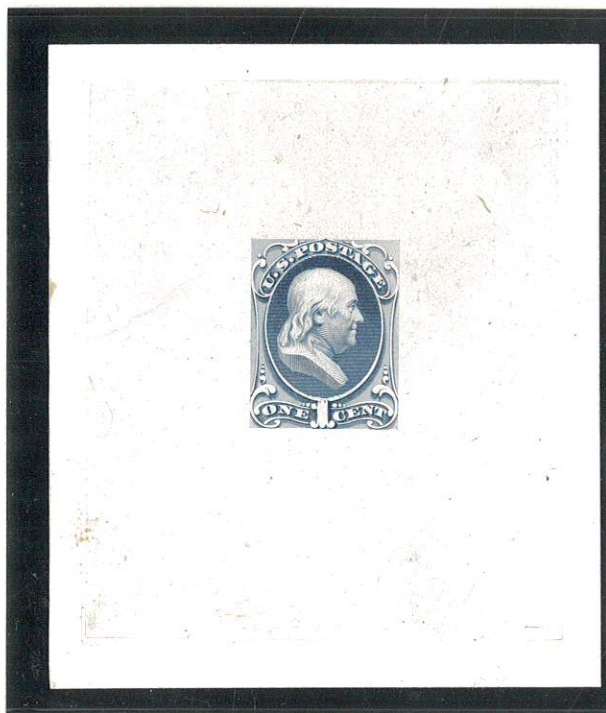


Black vignette of Franklin, facing left, die sunk on India.

Small Die Essay on White, Laid, Paper



One Cent Essay, line engraved complete envelope, size 149x83 mm, no watermark, ultramarine, on white laid paper. Only reported copy.



Ultramarine die essay pulled on India paper and die Sunk on card. Ex- Earl of Crawford and Finkelburg.

Red Brown die essay pulled on India paper and die Sunk on card. Ex- Earl of Crawford and Finkelburg.

Carmine die essay pulled on India paper and die Sunk on card. Ex- Earl of Crawford and Finkelburg.

Small Die Essays Continued



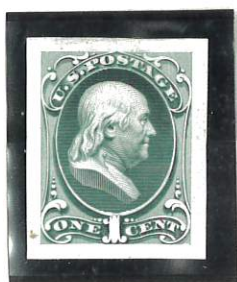
Dark Ultramarine  
(Ex-Tiffany)



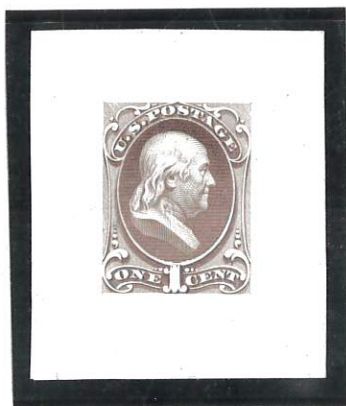
Blue Green



Brown Violet  
(Ex-Tiffany)



Light Green  
(Ex-Tiffany)



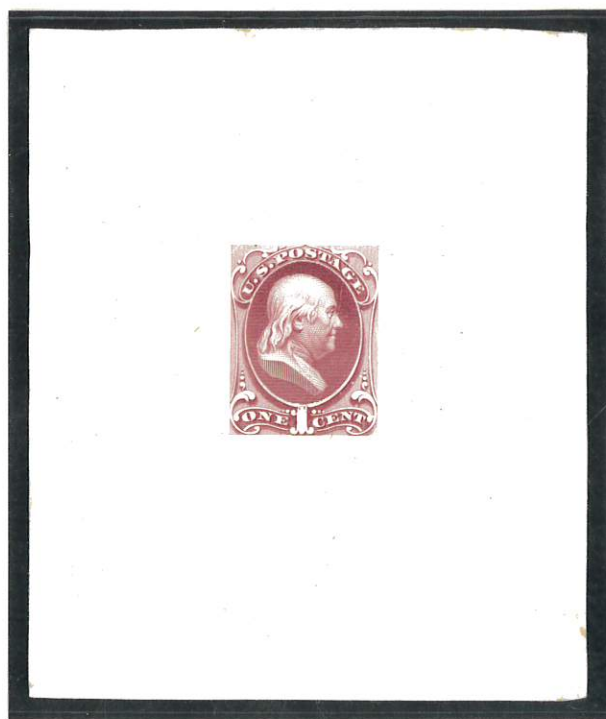
Dull Violet  
(Ex-Tiffany)



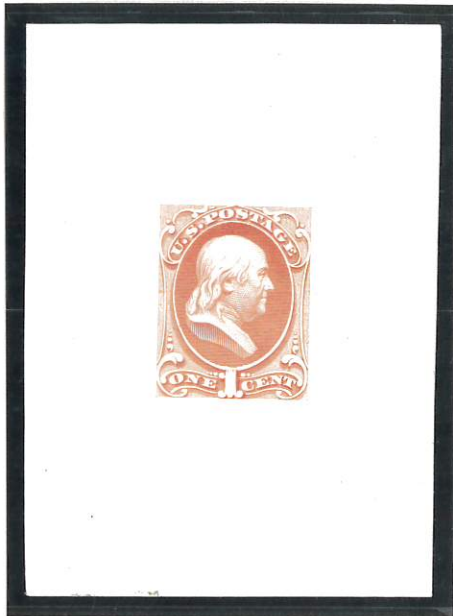
Dull Rose



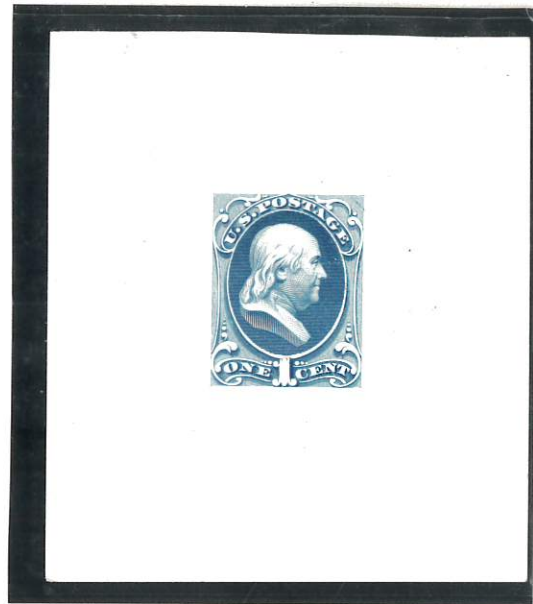
Red brown die essay pulled India paper and die sunk on card. Ex-Earl of Crawford and Finkelburg.



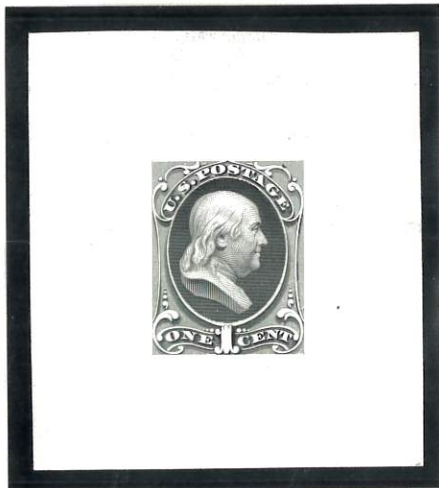
Carmine die essay pulled on India paper and die sunk on card. Ex-Earl of Crawford and Finkelburg.



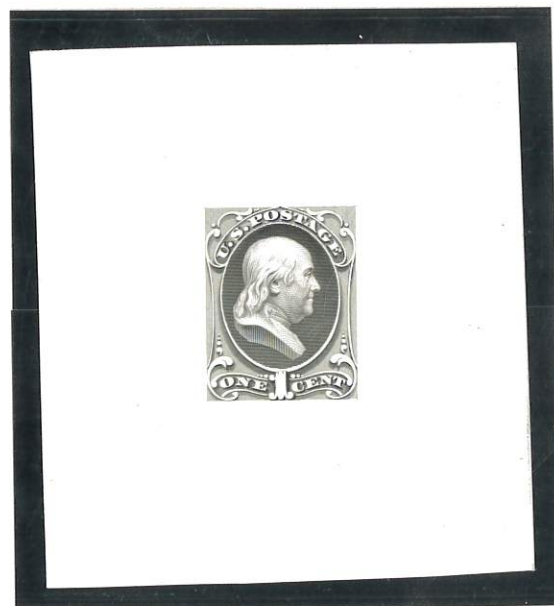
Scarlet large die essay (trimmed) pulled on Ivory glazed paper.



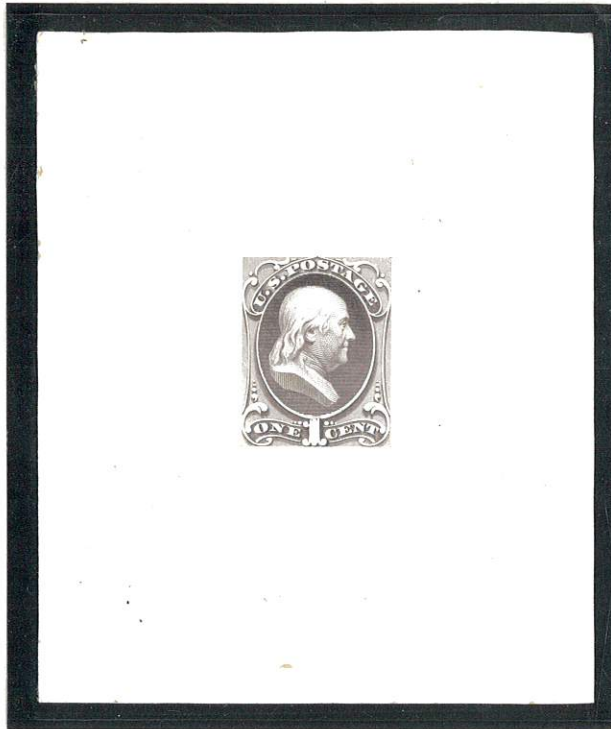
Blue large die essay pulled on Ivory, glazed paper.



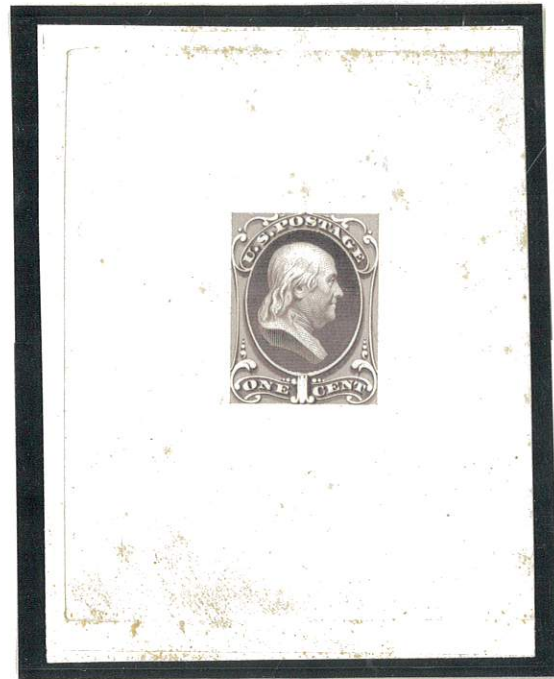
Black large die essay (trimmed) pulled on Ivory glazed paper.



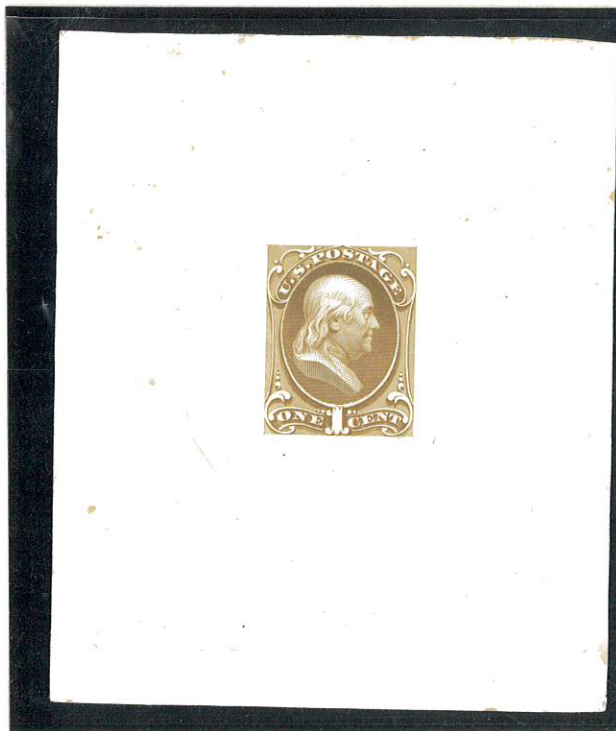
Black brown large die essay pulled on Ivory glazed paper.



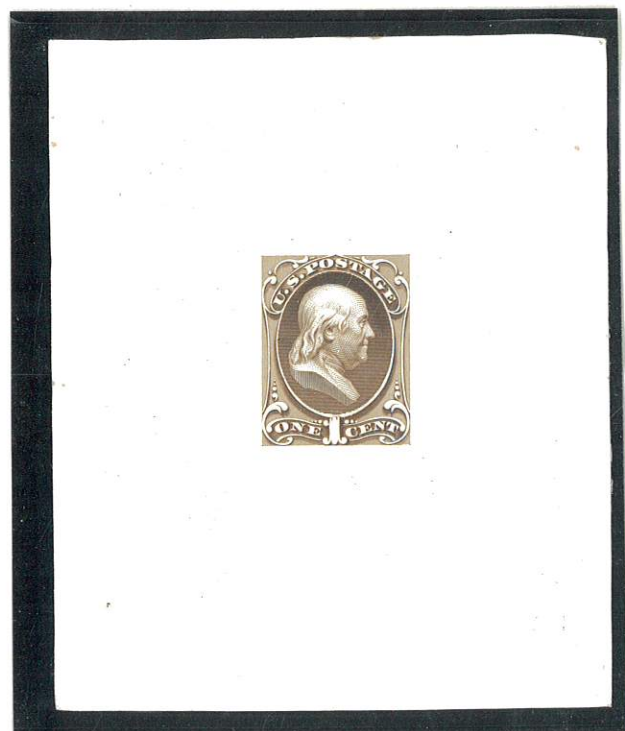
Dull lilac die essay pulled on India paper and die sunk on card. Ex-Earl of Crawford and Finkelburg.



Lilac die essay pulled on India paper and die sunk on card. Ex-Earl of Crawford and Finkelburg.



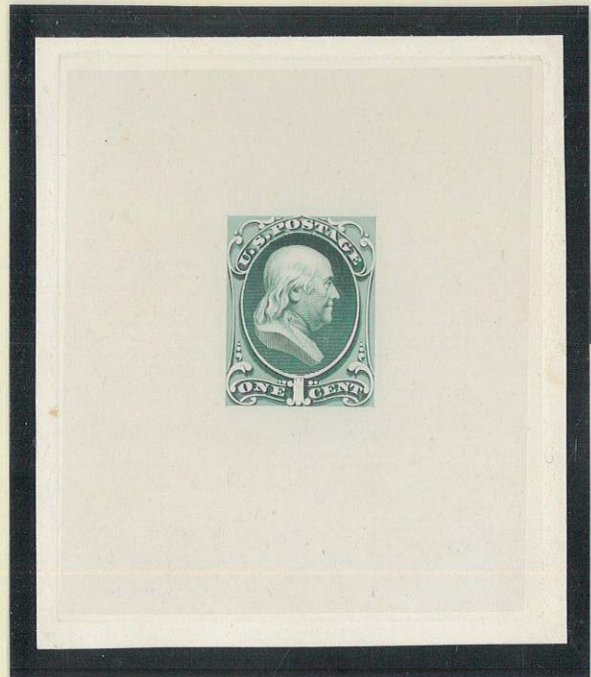
Dull yellow-brown die essay pulled on India paper and die sunk on card. Ex-Earl of Crawford and Finkelburg.



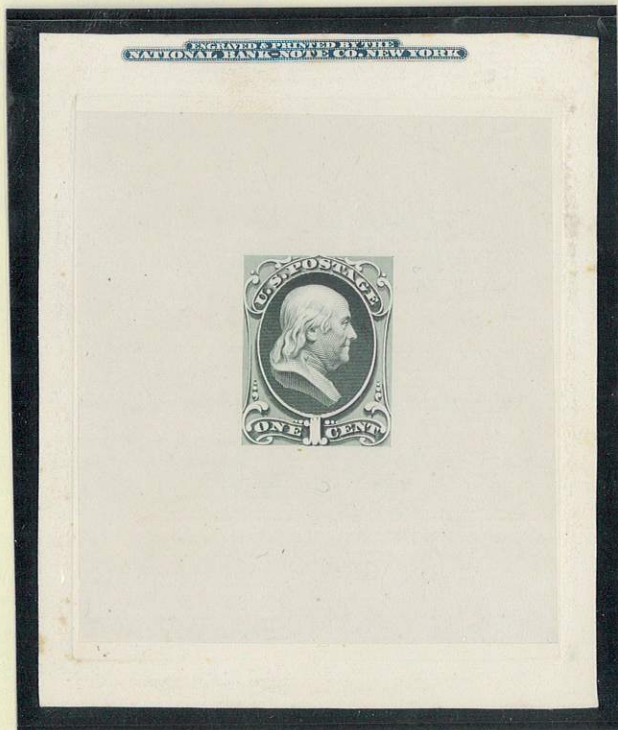
Brown die essay pulled on India paper and die sunk on card. Ex-Finkelburg.



Light Green die essay pulled on India paper  
And die sunk on card. Ex-Earl of Crawford  
and Finkelburg.



Green die essay pulled on India paper  
die sunk on card. Ex-Earl of Crawford and  
Finkelburg.



Gray Green die essay pulled on India  
paper and die sunk on card. Ex-Lieberman.



Mauve die essay pulled on India paper  
and die sunk on card. Ex-Earl of Crawford  
and Finkelburg.



Dusky yellow die essay pulled on thick wove paper.



Yellow brown die essay pulled on India paper.



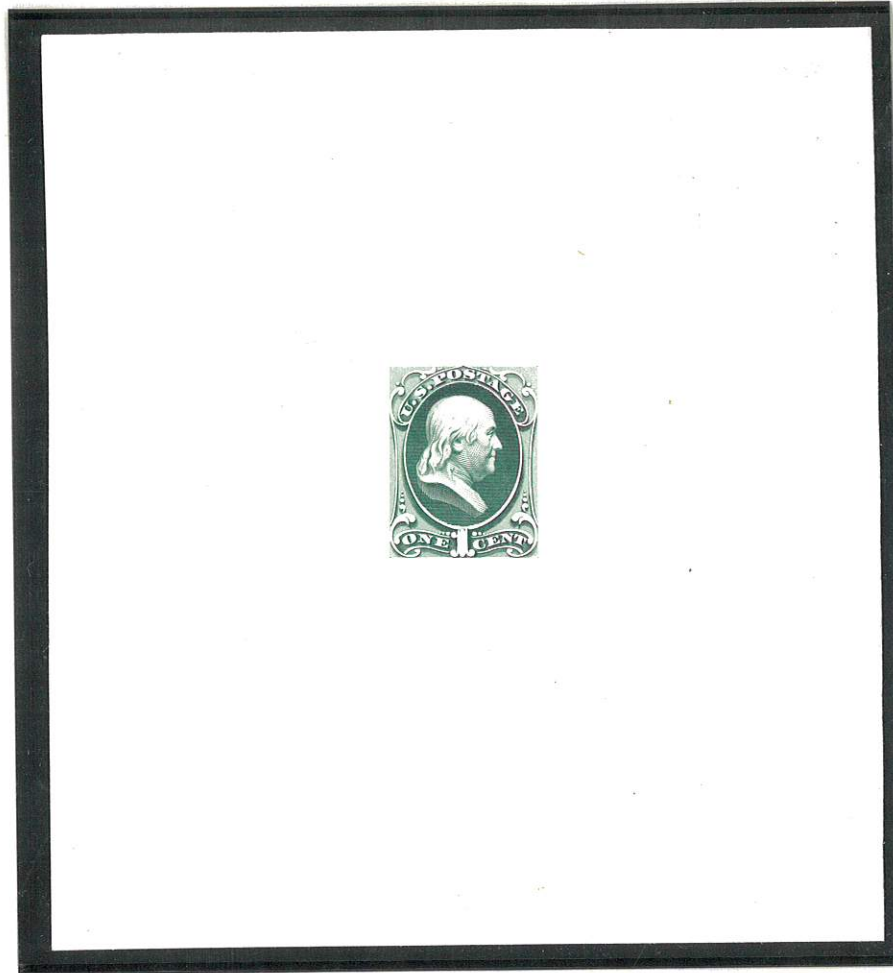
Brown die essay pulled on India paper.



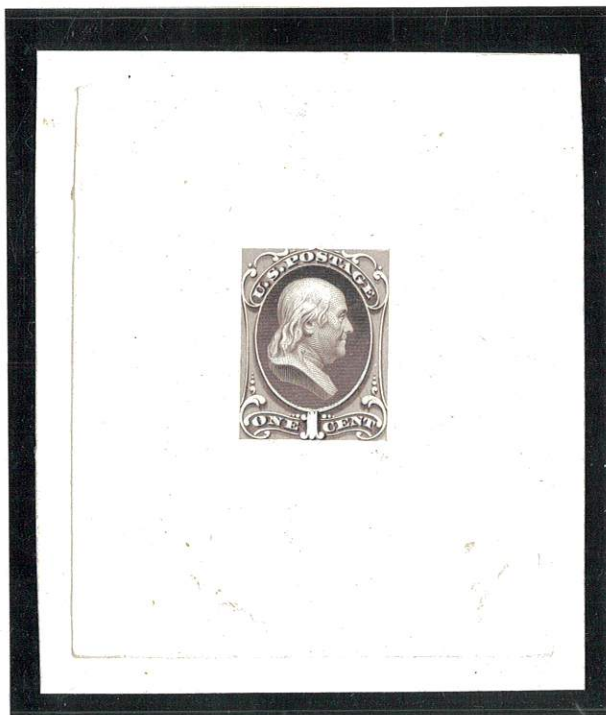
Brown die essay pulled on India paper.



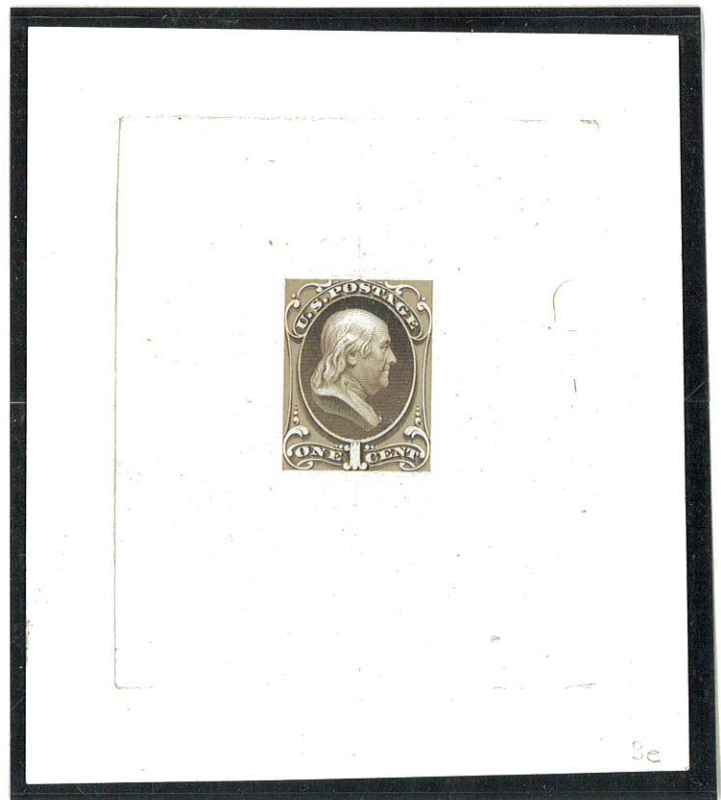
Black Brown die essay pulled on India paper.



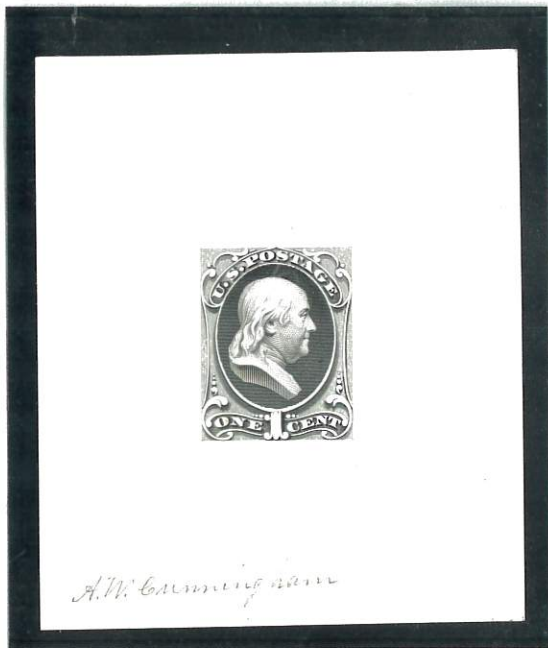
Green die essay pulled on Ivory glazed paper and die sunk on 110x123 mm card.



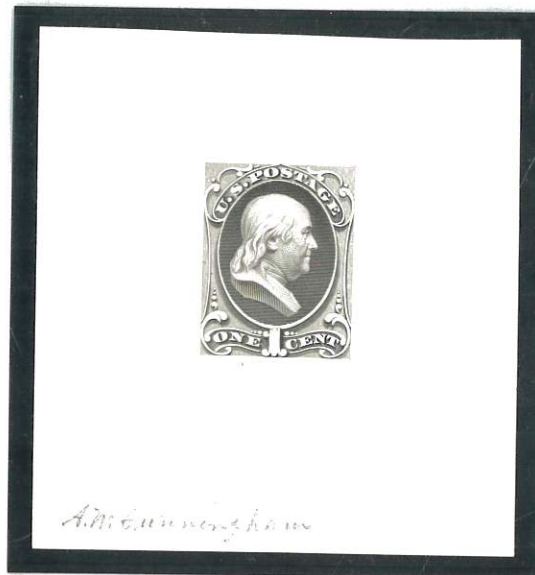
Dark brown die essay pulled on Ivory glazed paper and die sunk on card.



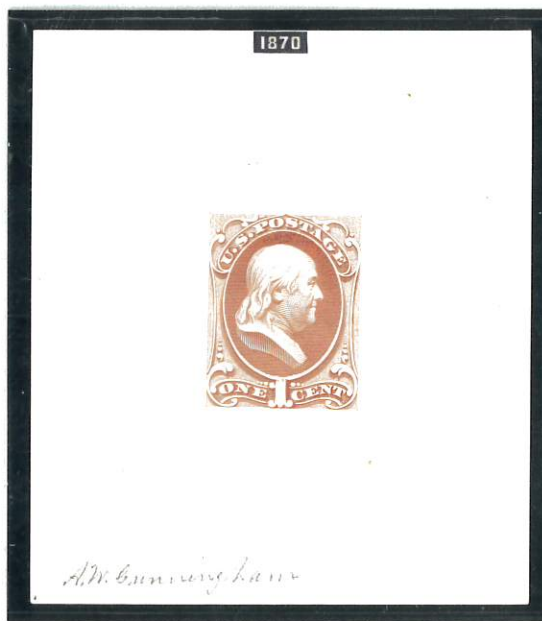
Carmine die essay pulled on Ivory glazed paper



Black die essay pulled on ivory paper and signed by the frame engraver, A.W. Cunningham. Ex-Earl of Crawford. Only known copy.



Black brown die essay pulled on ivory paper and signed by the frame engraver, A.W. Cunningham. Ex-Earl of Crawford. Only Known copy.



Scarlet die essay pulled on ivory paper and signed by the frame engraver, A.W. Cunningham. Ex-Earl of Crawford. Only known copy.

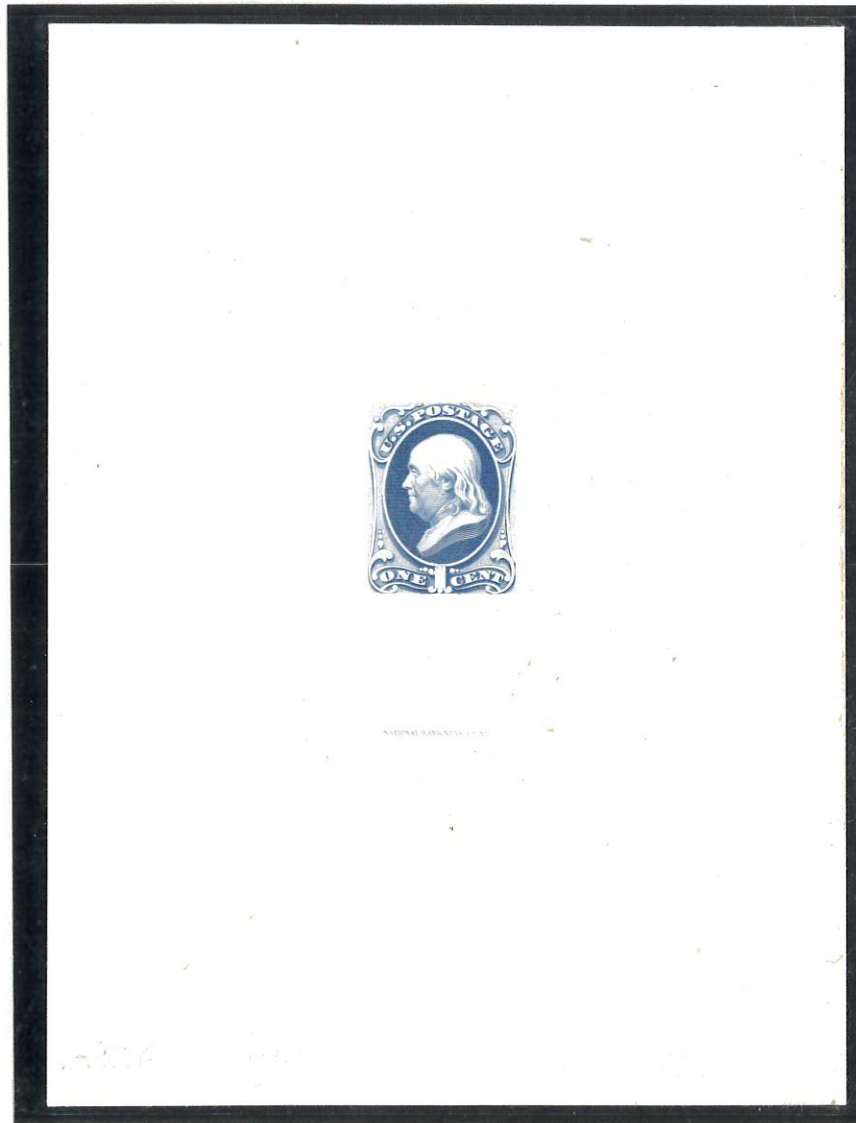


Blue die essay pulled on ivory paper and signed by the frame engraver, A.W. Cunningham. Ex-Earl of Crawford. Only known copy.



Carmine rose die essay pulled on India paper and die sunk on card. Full size.

A proof is an impression usually printed (pulled) directly from a plate or die before stamp production begins. It is used to "prove" (approve) the engraving of the die or the transfer to the plate.



Ultramarine die proof on India  
Signed by engraver, A.W. Cunningham.

23



*no. 1 - Last issue  
1870*

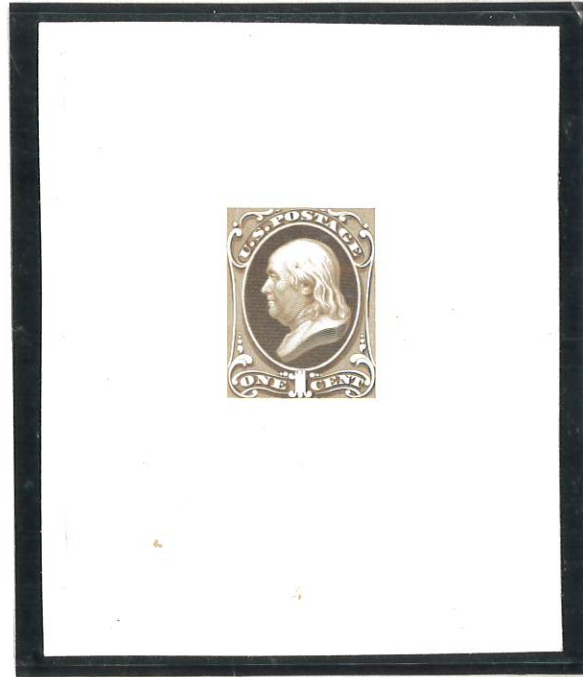
Ultramarine Large Die Proof from a presentation book. Full size.

**Trial Color**

A trial color proof, is typically a die proof (although it could be a plate proof) printed in a test color, as part of the process of determining the color that a stamp will be issued.



Red-Brown on India  
Small Die Proof



Red-Brown on India and  
die sunk on card

**Issued Color Small Die Proof**



Ultramarine on card  
Small Die Proof

Issued Color Large Die Proof



Ultramarine large die proof pulled on India paper and sunk on 98x103 mm card that is embossed with a "National Bank Note Co. N.Y." seal. Only know copy.

Issued Color Sheet Block of 14 Die Proof

Between each company imprint and the central dividing line is the number of the plate, in script, Italic, numerals, preceded by "No." (i.e., number). This is the lower left pane position.



Type I  
imprint

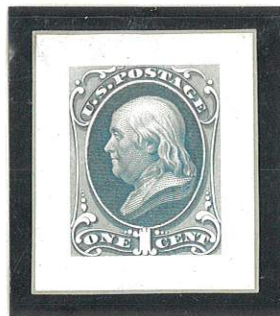
Plate  
number

Arrow  
pane divider

### 20<sup>th</sup> Century Small Die Proofs Pulled by the Bureau of Engraving and Printing

As various bank note companies held the contract to print United States postage stamps, the original dies were passed from company to company until they were owned by the Bureau of Engraving and Printing. There were two types of small die proofs printed by the Bureau of Engraving and Printing (BEP) from the original dies transferred to them. These are the "Roosevelt" proofs and the "Panama-Pacific Exposition" proofs.

The **Roosevelt Proofs** are from 85 presentation albums prepared for the Post Office Department during the Theodore Roosevelt Presidential Administration. These albums were produced at the direction of Postmaster General Maddin in 1903.



Roosevelt Small Die Proof  
Pale ultramarine on card.



Roosevelt Small Die Proof  
Gray blue on card.

The **Panama-Pacific Exposition Proofs** were made in 1914 for display at the 1915 exposition held in San Francisco, California. It has been reported by various sources that only five sets were prepared.



Panama-Pacific Small Die Proof  
Ultramarine on yellow wove paper  
Ex-Lieberman.